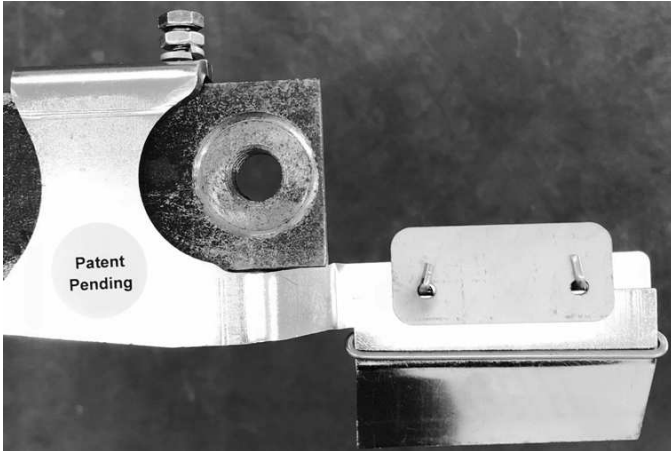


Pro Mags® Drill Scraper

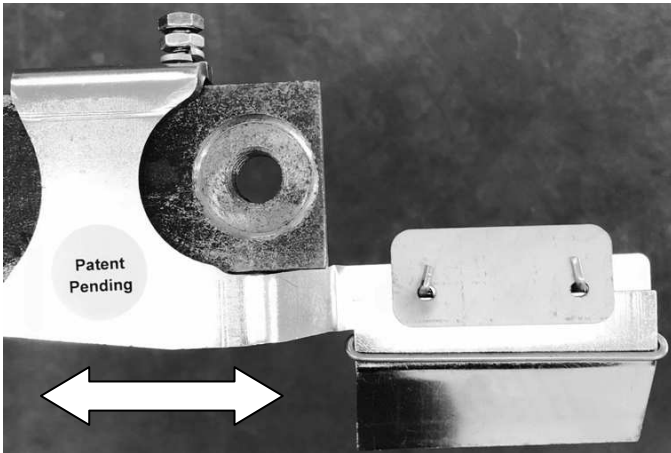
1. Remove the gauge wheel from the row unit.
2. Slide saddle onto mounting bracket.



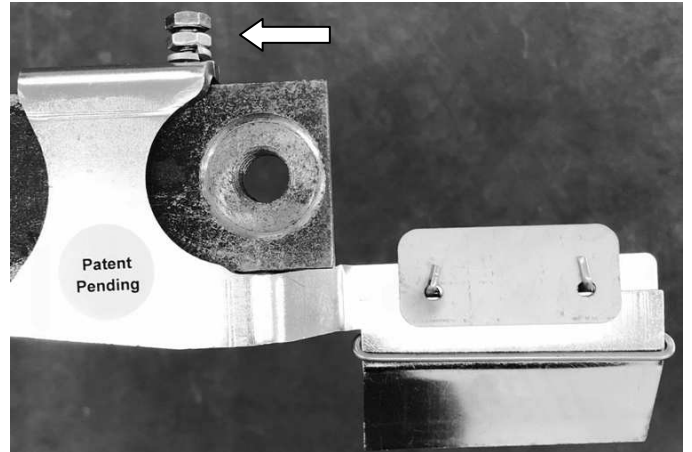
*NOTE: It may be beneficial to have the tension clip and/or scraper blade mounted for this step as pictured.

*Ensure the blade is installed facing the correct direction relative to the rotation of the opening disc.

3. Adjust placement of saddle to desired position along the mounting bracket. This will vary depending on the diameter of opener disc.



4. Tighten the lock bolt and jam nut to fix the scraper in position.



5. Replace and tighten the gauge wheel back onto the row unit.

Pro Mags Scraper Blade Installation

1. Start with one (1) scraper blade arm, one (1) stainless steel tensioning wire, and one (1) blade lock.



2. Insert the tensioning wire into the scraper arm by holding the tensioning wire vertical in relation to the scraper arm and pushing the two (2) tensioning wire posts through the two (2) receiving holes in the scraper arm.



3. While the two tensioning wire posts are still vertical attach the blade lock by running the tensioning wire posts through the two holes in the blade lock.



4. Push on the stainless tensioning wire so that the ends of the posts lie flat against the front side of the scraper arm and blade lock holding them securely in place.



4. Insert the scraper blade into the stainless tensioning wire and under the blade lock.

